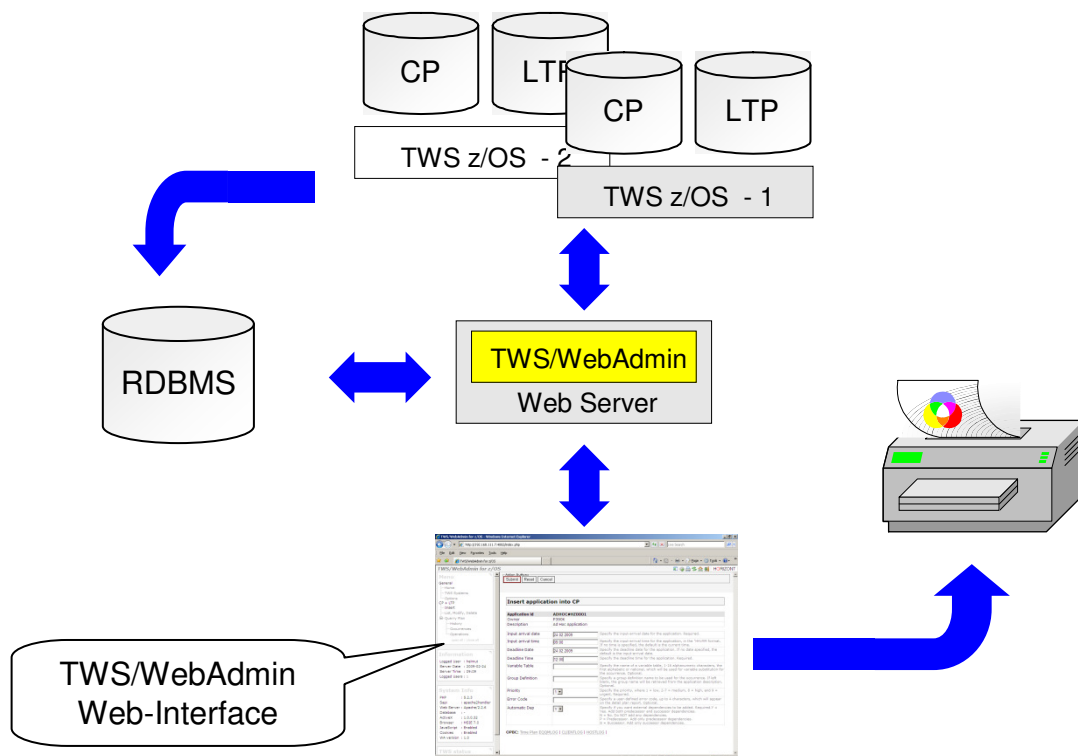


TWS/WebAdmin z/OS

The Web Interface for TWS

Most TWS users use the TWS ISPF interface. It is fast, reliable and easy to use, but it has one big disadvantage: It is designed for TWS experts.

For all other users ISPF itself is simply unacceptable. In addition, the ISPF interface does not allow access to multiple TWS subsystems at the same time.



TWS/WebAdmin - The Web Interface for TWS

TWS/WebAdmin z/OS is the solution for both problem areas. Production planners and controllers can easily manage the Current Plan on multiple TWS subsystems, and all other personnel can access TWS data via an easy-to-use Web interface.

The CP data is automatically synchronized with an RDBMS, which contains data from all subsystems. This provides answers to complex queries and the creation of multiple report types and graphics (barcharts and netplans) - without impacting the TWS subsystems in any way.

TWS/WebAdmin z/OS

The Web Interface for TWS

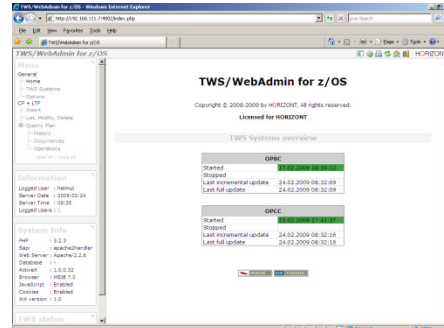
Areas of application

TWS/WebAdmin is the program of choice for anyone responsible for Production Processing:

- Production planning
- Production control
- Application programmers
- Anyone who requires information about a TWS Current or Long Term Plan

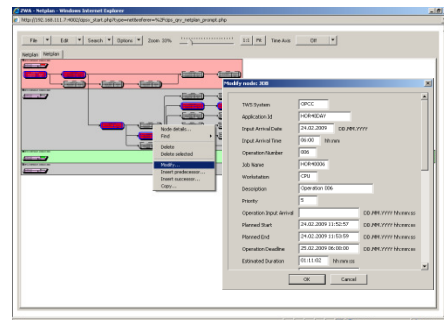
Features

- Applications in CP and LTP
 - Display
 - Delete
 - Insert
- Applications in CP
 - Restart of all error operations
 - Restart from a selected operation
 - Occurrence – Set to Complete
 - Change Input arrival
- Operations in CP
 - Modify all attributes (Input arrival, workstation)
 - Operation insert and delete
 - Dependency insert and delete
- Plan analysis
 - Fast queries, e.g. which jobs are planned between 10:00 and 12:00
 - Graphics (netplans and barcharts)
 - Special resource usage
 - Critical path
 - Based on actual or “historical” plan



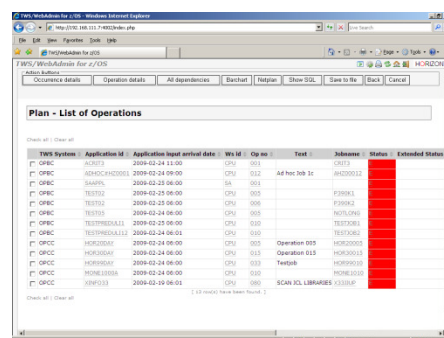
Multiple Subsystems

All TWS subsystems are accessible from one single browser window, or, even better, from one single list, e.g. the operation list.



Netplans and Barcharts

The TWS plan is presented as an easy-to-understand netplan or barchart. TWS/WebAdmin supports all printers and plotters. Create easy-to-read printouts for daily work, for project groups, for departments or anyone who needs clear, concise information about production.



Reporting

TWS/WebAdmin includes a useful set of pre-defined reports and charts to display every last nugget of information from TWS: Object Definitions, History, Statistics, etc. Use the included reports, build your own queries, or run raw SQL queries to get the information you need.