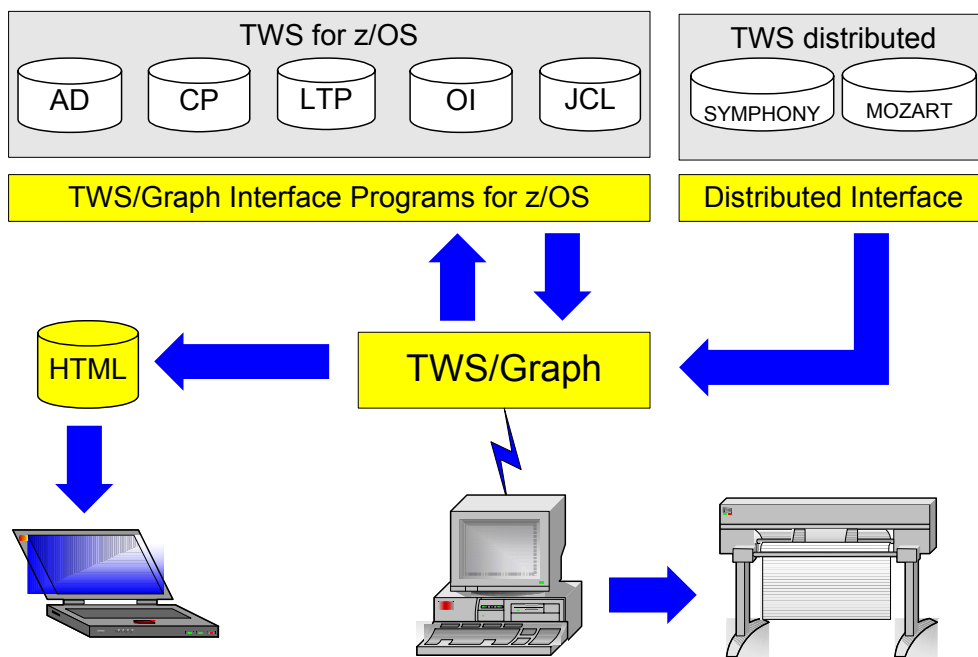


# TWS/Graph

## Graphics, Documentation and Monitoring for TWS z/OS

As a user of TWS, you know how important these systems are for planning, automation, and control of your batch processing. With perhaps thousands of jobs running every night, TWS is critical to the completion of your batch production.

However, as projects grow, they become harder and harder to manage. When you are faced with problems, change requests or simply the need to have TWS information available: TWS/Graph is the only choice.



*TWS/Graph - The new view to TWS*

TWS/Graph's PC component displays your TWS data in a way you have never seen before: Applications, operations, internal and external dependencies, run cycles, run rules and special resources etc. are shown as easy to understand netplans and barcharts.

Use TWS/Graph to distribute TWS information, even via the Internet or Intranet. Use any Browser to access TWS information from anywhere at anytime. Visit our homepage and see an example: [www.horizont-it.com](http://www.horizont-it.com).

**HORIZONT**  
Software for Data Centers

Garmischer Str. 8  
D-80339 München  
Tel. ++49 (0) 89 / 540 162 - 0  
[www.horizont-it.com](http://www.horizont-it.com)

# TWS/Graph

## Graphics, Documentation and Monitoring for TWS z/OS

### Areas of application

TWS/Graph is the program for anyone who needs information about TWS definitions, status information from the Current plan, etc.

- Production planning
- Production control
- Application programmers
- Non IT departments
- Project and test teams

### Data

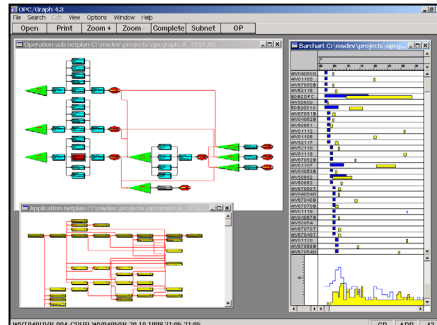
TWS/Graph allows access to data from the Application Description, the Current plan, the Mozart and the Symphony file.

- Applications and Schedules
- Operations
- Dependencies
- Special Resources
- Operator Instructions
- Status Information
- JCL

### Online and Offline

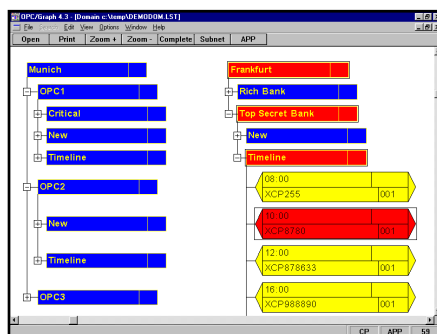
TWS/Graph for distributed can be used offline, TWS/Graph for z/OS can be used offline and online:

- Offline allows you to provide TWS information to departments, without giving them access to live data.
- Online provides direct access to the Application description and the Current plan. The Application description can be updated directly.
- Online as a Status monitor



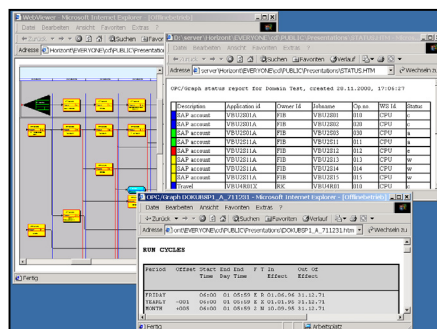
### Netplans and Barcharts

Your information is presented as an easy to understand netplan or barchart. Symbols can be customised for clarity and convenience.



### Status monitor

Use TWS/Graph to monitor critical Applications and Operations, or the whole production. The REXX- and email interface allows you to set up a complete monitor and alerting system based on your TWS data.



### Intra- and Internet

TWS/Graph supports your Web Browser in various ways: Use the WebViewer to distribute netplans and barcharts, documentation of your Applications and status information from the Current plan can be automatically created as HTML files.